

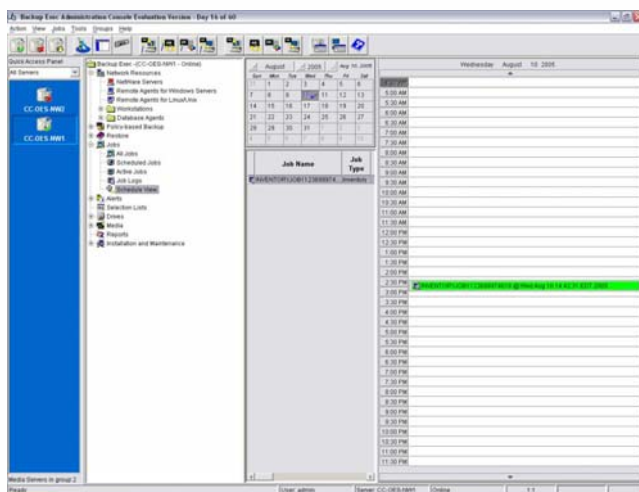
Symantec Backup Exec™ 9.2 for NetWare Servers

REDEFINING NETWARE DATA PROTECTION

Today's complex networks demand a fast, reliable, easy-to-use backup solution – whether it is mission-critical data on a Novell NetWare server, a remote user's workstation or the entire operating system. When recovery is required, it should be simple to accomplish, fast to complete and should perform without fail – every time.

KEY BENEFITS

- Certified Solution for Protecting Novell NetWare
- Faster Backup Performance
- High performance data protection of NetWare, Windows, Linux and UNIX servers
- Full Integration with Novell Applications
- Enhanced Media Management



Symantec Backup Exec™ 9.2 for NetWare Servers Redefines NetWare data protection by delivering the latest backup and restore technology for quickly, reliably and simply protecting server and workstation data. Backup Exec's graphical user interface provides enhanced functionality and manageability. Remote agents for NetWare* and Windows servers*, as well as included agents for Windows 98/ME, Windows NT and Windows 2000 workstations, Windows XP Professional, Macintosh, UNIX and Linux offer cross-platform protection. Use options for Intelligent

Disaster Recovery™, Library Expansion and Open File backup to further customize the NetWare data protection environment. Create storage area networks (SANs) that share tape libraries dynamically between multiple NetWare or Windows servers, with the Shared Storage Option. Features for media management, reading ARCserve tapes, creating duplicate archive tapes and cross-server management help make Backup Exec the ultimate backup solution for NetWare.

PRODUCT HIGHLIGHTS

- **Novell Certified** – “Yes, Tested and Approved”.
- **NEW! Remote Agent Client Access License (CAL) for Linux or UNIX Servers-** Provides high performance network-wide data protection for remote Linux and UNIX servers.
- **ENHANCED! Open File Option for Clustered Volumes-** Provides open file protection for clustered volumes.
- **Backup-to-disk** – allows backup and restore from non-removable storage devices, such as hard drives, for faster backup and recovery performance.
- **NetWare Administration Console with wizards** – features an identical Graphical User Interface from either a NetWare Server or Windows system, delivering complete flexibility to manage of your backup environment.
- **Full protection of Windows 2003 Servers** – Full protection for the latest Microsoft Windows operating systems including Windows 2003 Servers, via Remote Agent for Windows Servers.
- **Media Management** – multiple slot utility operations and custom label media simplify media administration.
- **Duplicate Set Copy** – Enables administrators to copy existing backup sets or those being created during a backup job – providing redundant backups, which may be used for off-site storage.
- **Novell Cluster Services failover support** – enables automatic failover for multi-node cluster environments and provides checkpoint restart allowing completion of backups using the last successfully backed up file, directory or backup set rather than having to restart from the beginning – greatly reducing backup time.
- **Integration with Novell Distributed Print Services** – facilitates printing of job logs through Novell Distributed Print Services (NDPS), leveraging Novell's most advanced printing services, including iPrint.
- **Support for NSS Open Files on NetWare 6.x*** –

ensures that every file on your NetWare 6.x server is protected even while in use.

- **Support for Intelligent Disaster Recovery on NetWare 6.x*** - fast and simple recovery when disaster strikes.

Industry Firsts

- First certified Novell "YES Tested and Approved" backup solution for NetWare 3.x, 4.x, 5.x, 6.0 and 6.5
- First intelligent disaster recovery solution for NetWare 5
- First to support Novell Cluster Services
- First heterogeneous Fibre Channel SAN solution for mixed NetWare, Windows NT and Windows 2000 environments
- First to support Novell Storage Management Services (SMS) specification for NetWare backup

Full Integration with Novell Applications

As the first backup solution to support Novell NetWare and Novell Storage Services (NSS), Backup Exec continues to leverage Novell Technology. New support provides administrators the flexibility to print jobs logs through either Novell Distributed Print Services (NDPS) or traditional queue-based printing.

Support for the latest tape drive hardware provides access to the latest performance enhancements

Support for Novell Directory Services

Enhanced Support for Novell Cluster Services

Support for GroupWise Applications

Support for IFolder

Cluster Awareness

Improve system fault tolerance by protecting highly available Novell Cluster servers with Backup Exec leveraging Novell Cluster Services to provide automatic backup server failover in cluster deployments. Failure of the primary server invokes Backup Exec's Checkpoint Restart feature to automatically begin operation on a secondary node at the point of failure, redirecting the current job and remaining scheduled jobs to the secondary node in the cluster. This allows backup jobs that are running during a failover, to restart from the last successfully backed up file, directory, or backup set and saves administrators time by eliminating the need to restart a backup from the beginning.

Faster Backup Performance

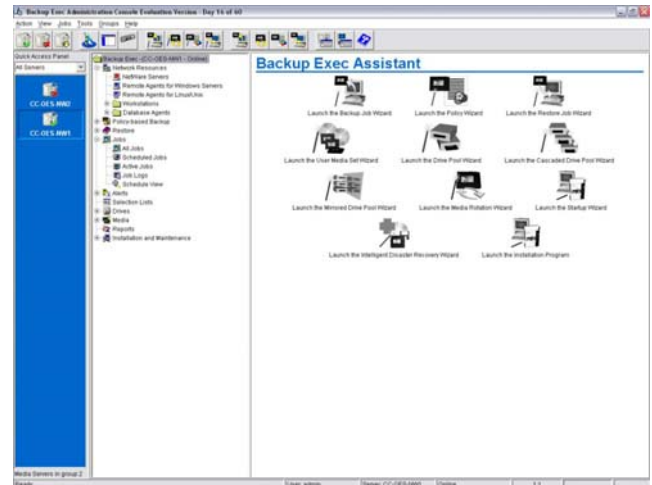
Symantec Backup Exec™ 9.2 for NetWare Servers provides administrators simple backup, restore, and media management operations for maximum flexibility and data protection. Backup Exec simplifies the creation of backup strategies and media rotation. With new features such as Backup-to-Disk and duplication of backup data, disk-staging and off-site storage of critical data is further simplified.

Backup-to-Disk allows administrators to back up and restore data from non-removable storage devices such as hard drives, reducing backup and restore processing time. Backups of critical data can be performed frequently and later staged to removable media such as tape. Backup-to-Disk backups can be combined with Duplicate Backup Data jobs to provide full data protection.

Updated Administration Consoles with Wizards

Symantec Backup Exec Software's Administration Console can be installed on and run from a NetWare Server or a remote Windows system. The Administration Console includes a graphical user interface with a shortcut bar that allows users to group media servers for easy navigation and increased manageability. Centralized password management allows setting or modification

of passwords from one location, reducing management time. Integrated Calendar View and Holiday Scheduler enables jobs to be modified, added to or rescheduled from a single location. Create utility operations to erase or catalog tapes directly from the workstation or from the NetWare console, enhancing management capabilities. Integrated reporting allows users to view scheduled jobs, available media, device statistics, policy data and much more!



Wizards simplify management with step-by-step detailed instructions for creating backup and restore jobs, drive pools and media sets.

Enhanced Media Management

Backup Exec software's media management capabilities automate operation of standalone tape drives, single drive and multi-drive tape libraries**. Built-in wizards help group backup devices into logical pools, create media sets and establish Grandfather-Father-Son media-rotation schemes. Multi-slot utility operations allow administrators to submit catalog, erase, inventory, verify and label utility jobs to multiple slots via the Java-based or NetWare Administration Console – decreasing administration time.

Other features such as automatic media labeling and customization, cleaning, user-defined retention period, media statistics, catalogs displaying volume or media centric view, bar-code reader and portal support further simplify day-to-day management. Drive pools allow jobs to run concurrently, and to be automatically directed to the first available drive using dynamic load balancing – for optimized performance. In the event a tape drive fails, the job is automatically rerouted to the next available drive in the pool, providing fault tolerant processing. Backup Exec enables administrators to copy existing backup sets or those being created during a scheduled backup job, providing redundant backups that may be used for offsite storage. Additionally, administrators can use this functionality to migrate data between different media types.

Maximum Performance

The Remote Agents* are performance optimized to protect remote NetWare and Windows Servers. Through its distributed processing and source compression, Backup Exec Remote Agents minimize network traffic, maximize performance and significantly reduce backup time.

Features	Benefits
Performance, Availability and Protection	
<ul style="list-style-type: none"> • Backup-to-Disk 	<ul style="list-style-type: none"> • Allows backup and restore from non-removable storage devices, such as hard drives, for faster backup and recovery performance. Backups can be staged to disk and later archived to tapes.
<ul style="list-style-type: none"> • Intelligent Disaster Recovery Option* for NetWare 6.x 	<ul style="list-style-type: none"> • Minimizes lost time and reconfiguration chores by providing a fast, simple recovery method when disaster strikes
<ul style="list-style-type: none"> • Duplicate Backup Set 	<ul style="list-style-type: none"> • Enables administrators to copy existing backup sets or those being created during a backup job – providing redundant backups, which may be used for off-site storage.
<ul style="list-style-type: none"> • Pure IP Support 	<ul style="list-style-type: none"> • Allows manageability from a remote workstation or server in a pure IP environment
<ul style="list-style-type: none"> • Outlook-style Calendar Based Job Scheduler 	<ul style="list-style-type: none"> • Facilitates viewing of job scheduling and management of backup operations. A Holiday Calendar enables administrator to specify days when the backup job scheduler will be offline
<ul style="list-style-type: none"> • Support for Bootable Tape Drives 	<ul style="list-style-type: none"> • Speeds disaster recovery by allowing system boot directly from tape – no diskettes to track or lose
<ul style="list-style-type: none"> • Media Management 	<ul style="list-style-type: none"> • Easy set up of media formatting, labeling, tracking, rotation, defining or retention periods and catalog viewing
<ul style="list-style-type: none"> • Drive pools 	<ul style="list-style-type: none"> • Allow users to target a job to a set of available drives for easy failover
<ul style="list-style-type: none"> • Media Sets 	<ul style="list-style-type: none"> • Allow users to define media retention periods for improved reliability
<ul style="list-style-type: none"> • Backup via Specified Backup Network 	<ul style="list-style-type: none"> • Reduces LAN traffic by isolating backup operations to a sub-network via a specified NIC card
<ul style="list-style-type: none"> • ARCserve Tape Read Capability 	<ul style="list-style-type: none"> • Read and restore Computer Associates' ARCserve 4, 5, 6.x, 7.x non-interleaved tapes
<ul style="list-style-type: none"> • Tape Mirroring 	<ul style="list-style-type: none"> • Create onsite and offsite tape copies simultaneously using standalone drives – one simple job creates two sets of tapes
Heterogeneous Support	
<ul style="list-style-type: none"> • Windows 98/Me/Windows NT/Windows 2000/Windows 2003/Windows XP Professional Support 	<ul style="list-style-type: none"> • Agents for many popular Windows workstation platforms included
<ul style="list-style-type: none"> • NEW! Remote Agent for Linux or UNIX Servers 	<ul style="list-style-type: none"> • Provides high performance data protection for data on Linux and UNIX servers across a network
<ul style="list-style-type: none"> • NEW! Open Enterprise Server Support 	<ul style="list-style-type: none"> • Now supports the Open Enterprise Server version of NetWare
<ul style="list-style-type: none"> • ENHANCED! Remote Agents for Windows or NetWare Servers* 	<ul style="list-style-type: none"> • Remote Agent for Windows Servers and Remote Agent for NetWare servers are now available as one agent instead of two separate agents. It minimizes network traffic, reduce server utilization and free bandwidth through source compression
Comprehensive NetWare Support	
<ul style="list-style-type: none"> • Novell Cluster Failover Support 	<ul style="list-style-type: none"> • Enables automatic failover for multi-node cluster environments and provides checkpoint restart allowing completion of backups using the last successfully backed up file, directory or backup set rather than having to restart from the beginning – greatly reducing backup time
<ul style="list-style-type: none"> • ENHANCED! Open File Option for Cluster 	<ul style="list-style-type: none"> • The open file option can now be used during backup remote cluster volumes
<ul style="list-style-type: none"> • ENHANCED! SMTP Notification 	<ul style="list-style-type: none"> • Multiple email addresses can now be entered for SMTP notification
<ul style="list-style-type: none"> • Complete Novell Directory Services (NDS) Integration 	<ul style="list-style-type: none"> • Comprehensive directory protection and auto-schema extension
<ul style="list-style-type: none"> • Integration with Novell Distributed Print Services 	<ul style="list-style-type: none"> • Facilitates printing of job logs through Novell Distributed Print Services (NDPS), leveraging Novell's most advanced printing services, including iPrint
<ul style="list-style-type: none"> • Multi-Slot Utility Operations 	<ul style="list-style-type: none"> • Provides administrators the ability to submit catalog, erase, inventory, verify and label utility jobs to multiple slots for faster administration

Redefining NetWare Data Protection

System Requirements – NetWare

NetWare Media Servers: NetWare 5.1, 6.0 or 6.5 (including NetWare Open Enterprise Server)

- 20 MB RAM over server requirements
- 32 MB RAM for Java server components
- 30 MB disk space required
- Compatible tape device and controller or enough free storage space to create a backup-to-disk folder
- Java Run-Time Environment (JRE) 1.1.7b also required. (See Administrators Guide for additional information)
- Long name space must be added to the volume where the Backup Exec files will be installed. Long name space must be installed and loaded for log files and for running the Java-based Administration Console from your media server. (NOTE: Adding long name space is not necessary for NetWare NSS volumes)

Remote NetWare Servers: Installation on NetWare 5.1, 6.0 or 6.5 (including NetWare Open Enterprise Server)

- 8 MB RAM over server requirements
- 14MB disk space
- IP Protocol must be installed and configured correctly

Remote Windows Servers and Workstation: Backup Exec installs on and protects Windows NT 4.0 Workstation/Server, Windows 2000 Professional, Windows 2000 Server, Windows 2000 Datacenter Server, Windows 2000 Advanced Server or Windows Server 2003 Family. Client protection includes remote Windows 98/ME, Windows NT 4.0 Workstation, and Windows 2000 Professional and XP Professional machines

Administration Console: Installation on Windows 95/98/Me/2000/XP Professional or Windows 2003 Servers
 64 MB RAM minimum
 30 MB disk space
 IP Protocol must be installed and configured correctly
 Desktop area of 1024 x 768 pixels
 Java Run-Time Environment (JRE) version 1.2 installed by Backup Exec to the local workstation

Administration Console: Installation on media server
 NetWare 5.1 or later
 JRE 1.3.1 or later
 64MB RAM
 30MB Disk Space

Macintosh
 OS X

Linux / UNIX

Red Hat Advanced Server 2.1
 Red Hat Enterprise Linux AS, ES, WS 3.0
 SuSE Linux Standard Server 8.0, 8.1, 8.2, 9.0
 SuSE Linux Enterprise Server 8.2, 9.0
 Solaris (SPARC, Intel) 8,9
 VMware GSX 3.1

For the most updated list of supported agent and client platforms, please refer to <http://seer.support.veritas.com/docs/278157.htm>

Supported Storage Hardware***

Most DLT, AIT, LTO, Travan, QIC, 4mm and 8mm SCSI tape drives and libraries manufactured by ADIC, Aiwa, Archive, Compaq, Dell, DEC, Exabyte, HP, IBM, Iomega, Quantum, Seagate, Sony, Tandberg, WangDAT, Wangtek and others
 Backup Exec supports unlimited standalone tape devices and can use removable or fixed disk storage for backup and restore.

Backup Exec provides support for a single robotic library drive. Support for additional robotic library drives is available by purchasing the Backup Exec Library Expansion Option.

For more information about supported tape drives or libraries, refer to the Backup Exec hardware compatibility list at: <http://seer.support.veritas.com/docs/278157.htm>

Supported Controllers***

- Most ASPI compliant controllers

Symantec Backup Exec 9.2 for NetWare Servers Product Offerings

Symantec Backup Exec 9.2 for NetWare includes support for one drive within a tape library. To support additional drives, you must purchase a Library Expansion Option for each additional drive.
 Symantec Backup Exec 9.2 for NetWare Servers
 Symantec Backup Exec 9.2 for NetWare Servers Version Upgrade (to upgrade from previous versions of Backup Exec for NetWare Single or Multi-Server Editions or from Backup Exec for Windows Server or Advanced Server Editions
 Symantec Backup Exec 9.2 for NetWare Servers Competitive Upgrade (to upgrade from a competitor's product to Backup Exec 9.2 for NetWare Servers

Symantec Backup Exec 9.2 for NetWare Servers Options

- Symantec Backup Exec Intelligent Disaster Recovery Option*
- Symantec Backup Exec Library Expansion Option*
- Symantec Backup Exec SAN Shared Storage Option*
- Symantec Backup Exec Open File Option*
- Symantec Backup Exec Remote Agent Client Access License (CAL) for Windows or NetWare Servers*
- Symantec Backup Exec Remote Agent Client Access License (CAL) for Linux or UNIX Servers*

* Option /Agent sold separately

**Requires Library Expansion Option

***For more information, consult the Backup Exec Tech Support Web page at: <http://seer.support.veritas.com/docs/278157.htm>

Symantec Corporation
 World Headquarters
 20330 Stevens Creek Blvd
 Cupertino, CA 95014
 408-517-8000 or 866-837-4827

For additional information about Symantec, its products, or the location of an office near you, please call our world headquarters or visit our Web site at www.symantec.com.